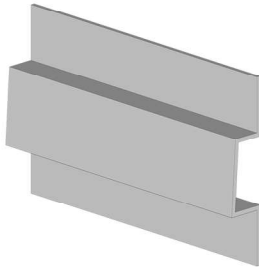


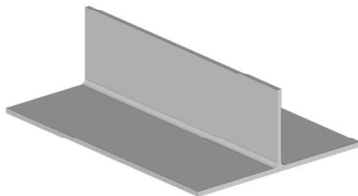




RUSTIKOTTA TILE



OMEGA PROFILE



VERTICAL T PROFILE



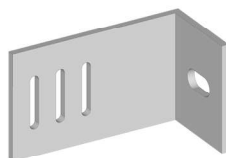
COUNTERSUNK STAINLESS STEEL
SELF DRILLING SCREW 4,2x28



STAINLESS STEEL SELF DRILLING
SCREW 5,5x25 (with different colors)



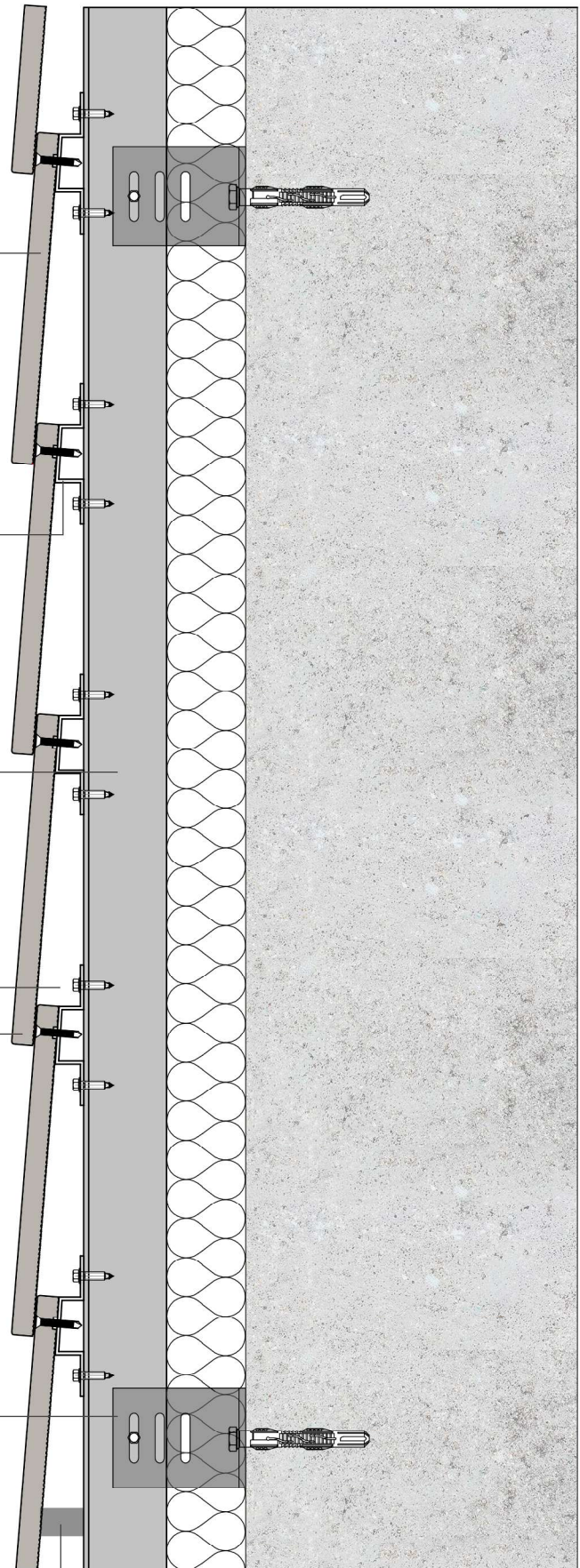
RIVET (when the structure is not aluminium)

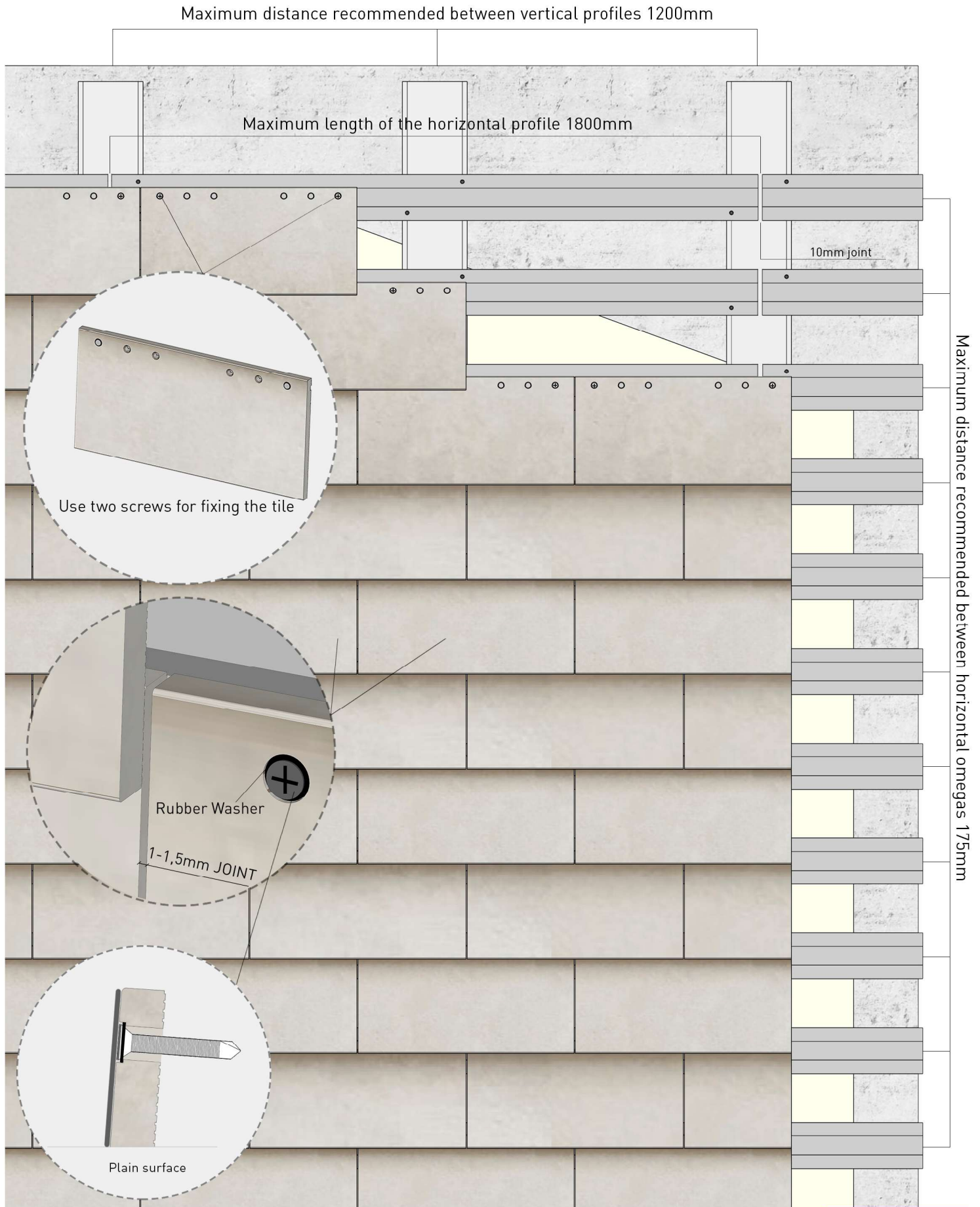


RETAINING BRACKET



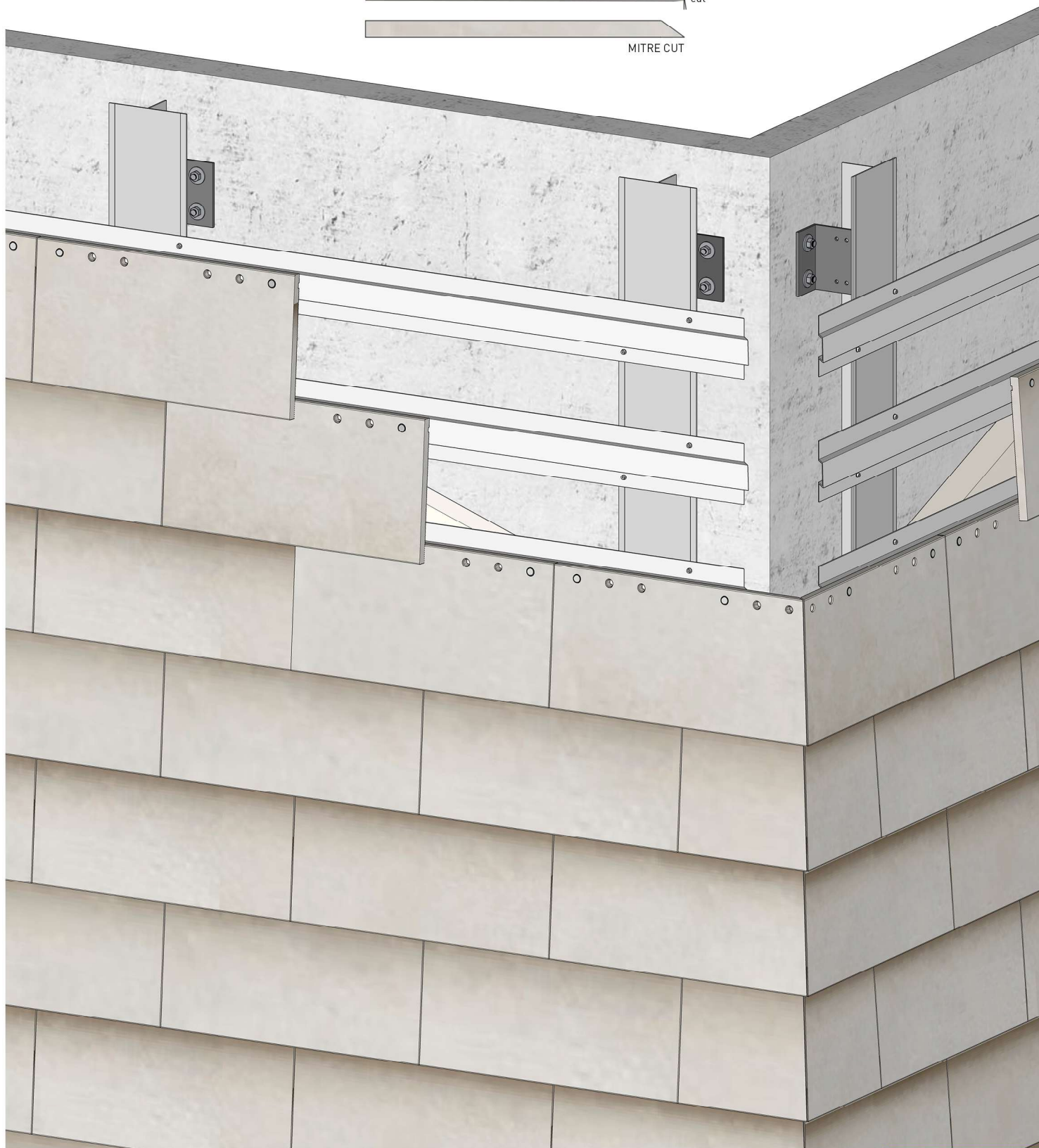
JUSTERBRIK 40x80mm







SPECIAL CUTTING OF THE TILE







TECHNICAL DATA SHEET

Rusticotta 14x200x400 and 14x200x520

For use in coating vertical façades

Water absorption.	EN ISO 10545-3	0.5 – 3.0 %
Modulus of rupture	EN ISO 10545-4	>17 N/mm ²
Frost resistance	EN ISO 10545-12	Fulfilled
Resistance to thermal shock	EN ISO 10545-9	Fulfilled
Impact resistance (by measurement of coefficient of restitution)	EN ISO 10545-5	0.7-0.9
Fire resistance		A1 No need for testing (Decision 96/603/EEC modified)
Stain resistance	EN ISO 10545-14	Group 5 (glazed)
Chemical resistance	EN ISO 10545-13	Group GA (glazed)
Linear termal expansion	EN ISO 10545-8	5.75 * 10 ⁻⁶ K ⁻¹ (±1)
Weight (simple)		30 kg/m ² ±0.5

Tolerances and dimensions		
Width	In extruding direction	±4.0 mm
Height	Opposite to extruding direction	±2.0 mm
Thickness	EN ISO 10545-2	±1.0 mm
Straightness (in extruding direction)	EN ISO 10545-2	±1.0 mm
Ortogonality	EN ISO 10545-2	±2.0 mm
Flatness	EN ISO 10545-2	±2.0 mm